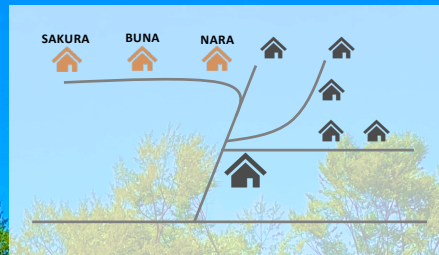
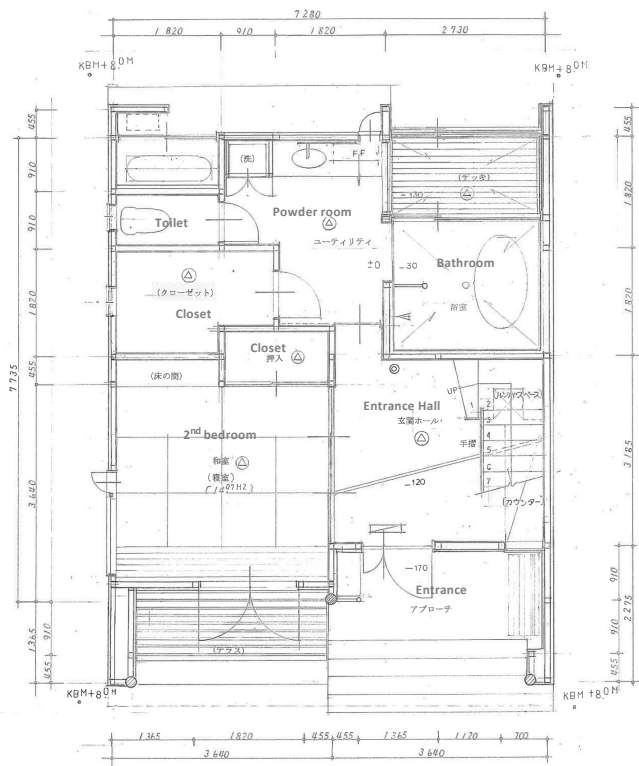


Luxury Villa



Type A Ground floor

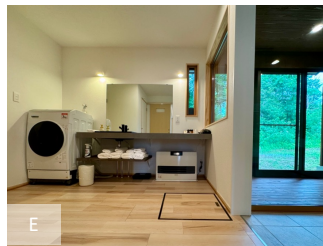
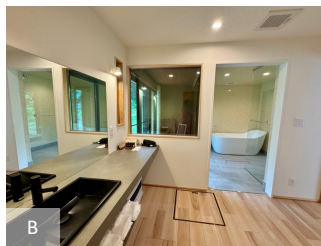


Photos

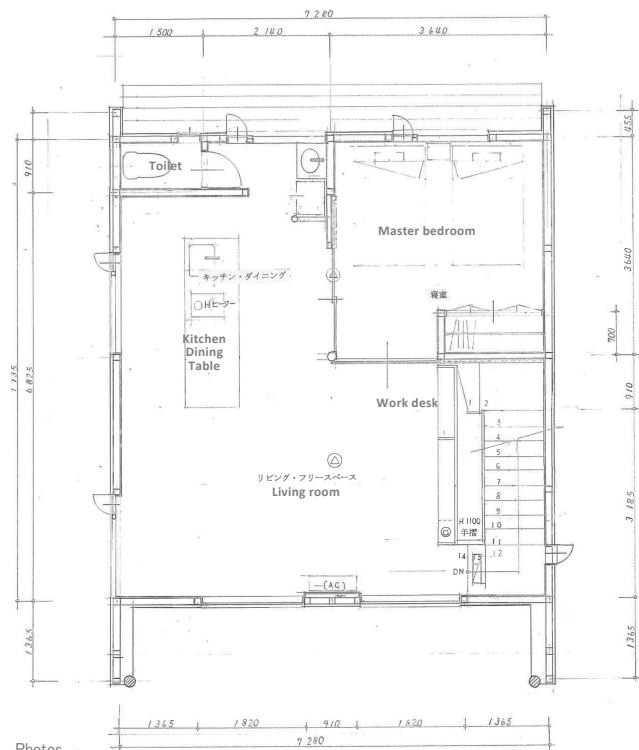
A. Bathroom
B. Powder room
C. Entrance
D. Second bedroom
E. Powder room

Amenities

Washer-dryer, overhead shower, bathtub, drying room, toilet, bathroom with veranda, bedroom with veranda (Japanese-style room), closet.



Type A First floor



Photos

A. Living room

B. Master bedroom

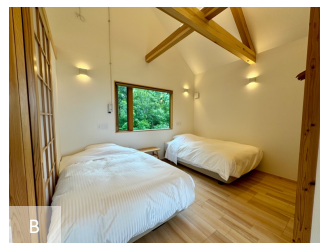
C. Kitchen with dining table

D. Kitchen

E. Living room

Amenities

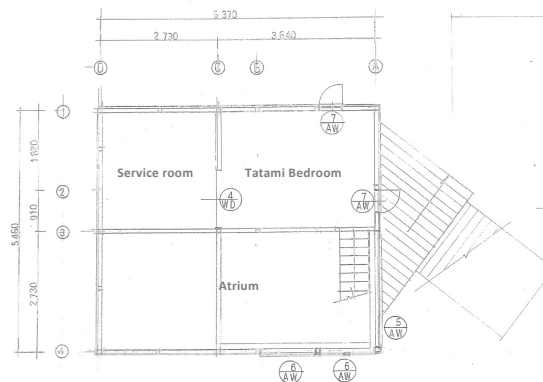
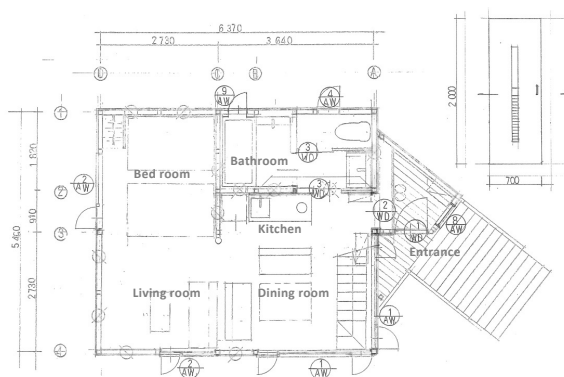
Kitchen (dishwasher, oven microwave, refrigerator, champagne glasses, wine glasses, tableware, IH cooking heater, high-chair dining table), toilet, washbasin, bedroom (two 140cm beds), electric piano, work desk, 50-inch TV, sofa.



Modern Villa A



Type B floor map



Photos

- A. Living dining room
B. Kitchen C. Master bedroom
D. Living room E. Living dining room

Data

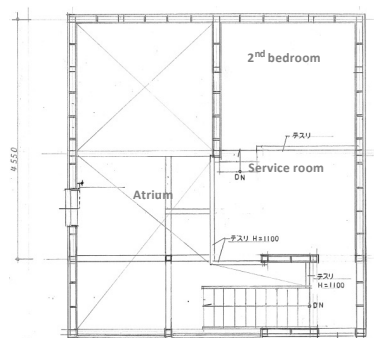
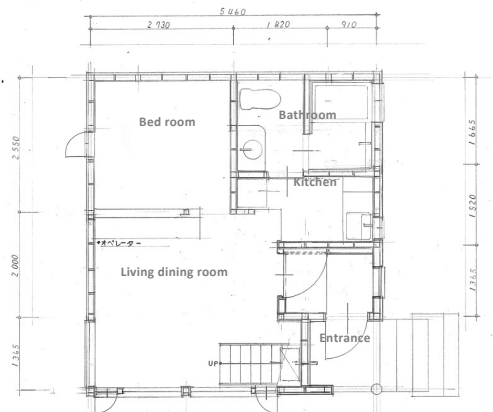
Ground floor : 38.56m²
First floor : 17.39m²
Total : 55.95m²



Modern Villa B



Type C floor map

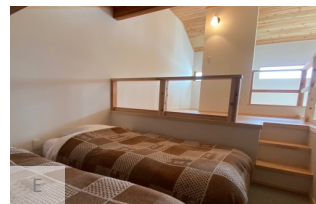
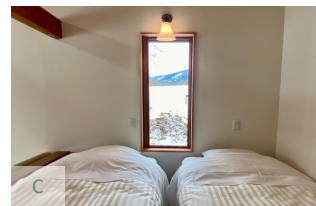


Photos

- A. Living dining room
- B. Kitchen
- C. Master bedroom
- D. Living room
- E. Living dining room

Data

Ground floor : 32.30㎡
 First floor : 12.42㎡
 Total : 44.72㎡



LOCATION



JAPAN AIRLINES

Yamagata Airport

Tokyo 2 flights 45min.
Osaka 3 flights 80min.
Nagoya 2 flights 70min.
Sapporo 1 flight 80min.



Shonai Airport

Tokyo 5 flights 60min.



Chartered Helicopter

Narita airport 80 min.

Yamagata Station 37min.
Yamagata Airport 42min.
Shonai Airport 55min.



Car PolePole to



Shinkansen bullet train

Tokyo – Yamagata 125min.

CLIMATE

	Jan	Feb	Mar	Apr	May	Jun	Jul	Aug	Sep	Oct	Nov	Dec
Weather												
High	1°C	2°C	5°C	12°C	20°C	23°C	26°C	27°C	23°C	17°C	11°C	4°C
Low	-5°C	-6°C	-4°C	0°C	5°C	11°C	16°C	17°C	13°C	6°C	1°C	-3°C

DATA

Yamagata prefecture

Population: 1,013,543 (as of 1st July 2024)

Area: 9,323.15 km² (Singapore: 734.3 km²)

Major industries: Agriculture, Manufacturing

Special products: Sake, Wagyu beef, Rice, Chery fruits, Apples, Grapes, Pears, Swords, iron pods

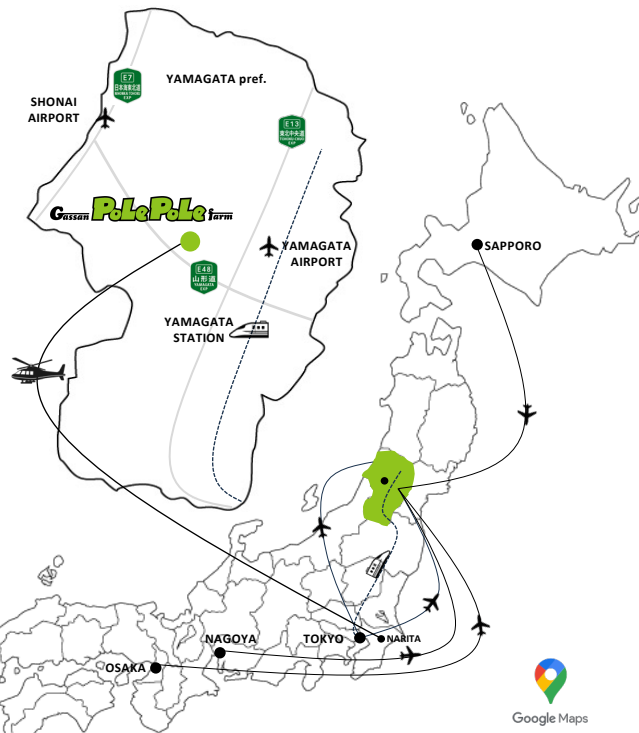
Nishikawa town

Population: 4,414 (as of 1st July 2024)

Area: 393.19 km²

Major industries: Agriculture, Tourism

Special products: Sake, Wagyu beef, Rice, Cherries, Apples, Grapes, Ski resorts, Trekking, Kayaking



Google Maps





After its opening, he cultivated the land with a tractor, designed the forest, and built cottages.

The hotel, which started as a small central lodge, has now grown into a beautiful resort covering 6.6 hectares, featuring eight cottages, a log house, a restaurant building, and a hot spring facility.



History

Gassan PolePole Farm was founded in 1980 by Teiji Okuyama. In the 1970s, he traveled the world with just a backpack. During his travels across all continents, he dreamed of creating a guesthouse in his hometown.

In 1980, his dream came true with the opening of "Gassan PolePole Farm" in the Gassan district of Yamagata Prefecture, his hometown. The hotel's name comes from the Swahili word for "slowly" or "leisurely," which he encountered during his travels in Kenya, Africa.



Gassan PolePole Farm will be passed on to the next generation. Teiji Okuyama's son, Noboru Okuyama, took over the management of the hotel in 2013.

He has since initiated the winter snow park and started offering tours for hiking, skiing, and sightseeing.

Building upon the foundation created by his father, Noboru strives to operate an environmentally friendly and cutting-edge lodging facility.

Company profile

Company name	Gassan PolePole Farm Co.,Ltd
Address	347-3 Tsukiyamazawa, Nishikawa-town, Yamagata
TEL	+81-237-75-2240
CEO	Teiji Okuyama
Capital	JPY 30,000,000
Establishment	As May of 1980
Business	Hotel, Mountain guide, Ski instructor, Tour arrangement
Area	66,200 m ²



Gassan PolePole Farm is a hotel nurtured by the Okuyama family. At this hotel, which includes the word "farm" in its name, we actually grow vegetables and fruits that we provide to our guests.

Starting in May, when the snow melts, we till the fields and harvest crops such as potatoes, corn, eggplant, onions, and bell peppers from summer to autumn.

We also have fields of watermelons, strawberries, and mountain grapes.

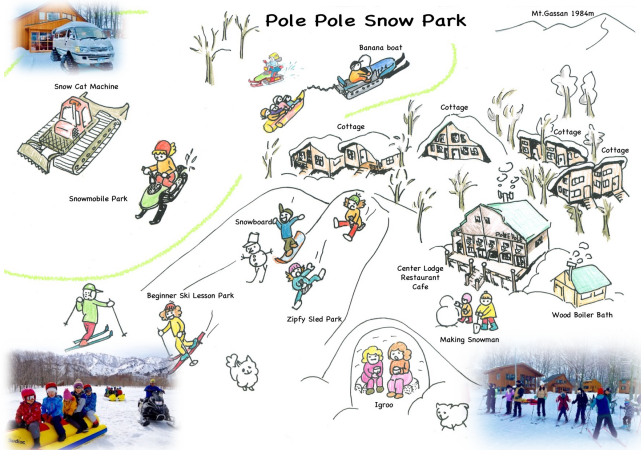
During the green season, guests can enjoy fresh dishes made with vegetables and fruits harvested from PolePole.



SERVICES

All the staff at PolePole are certified professional mountain guides. Yamagata is home to many famous mountains, such as Mt. Gassan, Mt. Chokai, Mt. Zao, and the Mt. Asahi range, and we can safely guide you through these mountains.

We also offer a variety of outdoor activities, including kayaking, cycling tours, skiing, and snowboarding. When you stay at PolePole, our staff will provide a range of outdoor experiences to ensure you have an enjoyable and memorable time.



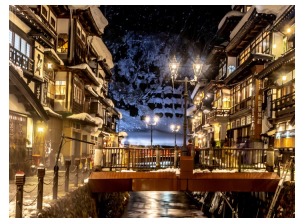
During your winter stay, you can enjoy the Snow Park within the resort.

The Snow Park offers experiences such as banana boat rides, snowcat cruises, and beginner ski and snowboard lessons.

In addition to renting skis and snowboards, we also offer ski wear and snow boots for rent. Additionally, we provide a service for storing winter sports equipment for cottage owners during the off-season.



LOCAL HOPPING TOURS



We offer guided tours of Yamagata and the Tohoku region.

We can take you to famous tourist spots such as Zao and Ginzan Onsen, as well as various local favorites, including beloved local confectioneries, stunning waterfalls, and charming historical towns.

Enjoy Yamagata Prefecture, a place that never ceases to delight no matter how many times you visit.

CUISINES



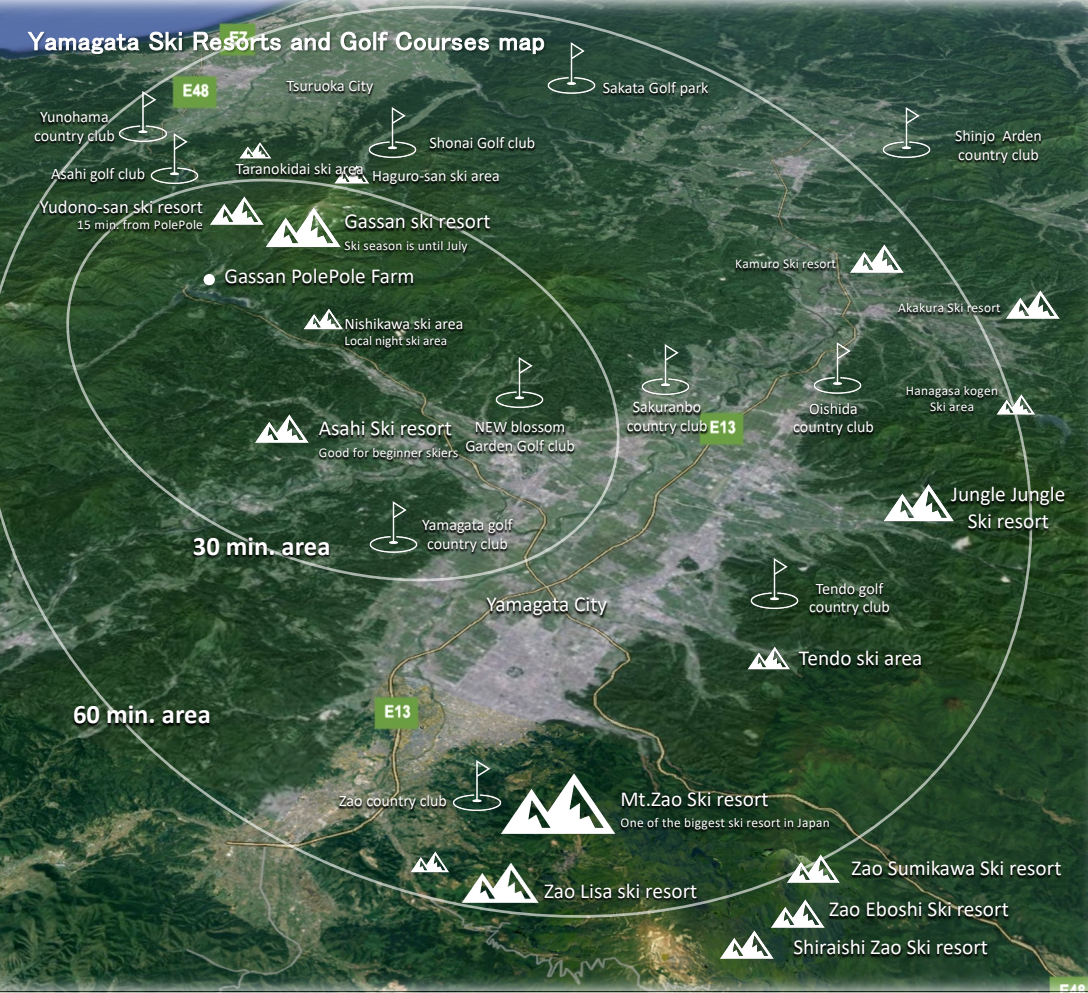
Room Service

Room service is available for breakfast and dinner delivery to your cottage. For dinner, you can order dishes such as shabu-shabu and sukiyaki. Additionally, we offer BBQ service in front of the cottage, and during winter, you can enjoy a snow BBQ.

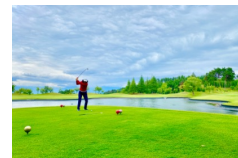
Restaurant Arrangements

We assist with reservations at wonderful partner restaurants around PolePole. You can enjoy a variety of cuisines, including delicious Yamagata Wagyu beef restaurants, Fresh Sushi restaurants, and traditional Japanese ryotei dining.

Yamagata Ski Resorts and Golf Courses map



Golf arrangement



Yamagata has over 10 golf courses. We arrange golf tours with transportation, English caddie service, and the best course selection according to your preferences.

Ski arrangement



Near PolePole, there are over 10 ski resorts. We arrange ski tours according to your skill level. We also offer ski lesson programs with a variety of courses. Our ski coaches choose the best slopes for your level. In addition, Gassan PolePole Farm has a beginner ski course right in front of your cottage, where you can take beginner ski lessons.